

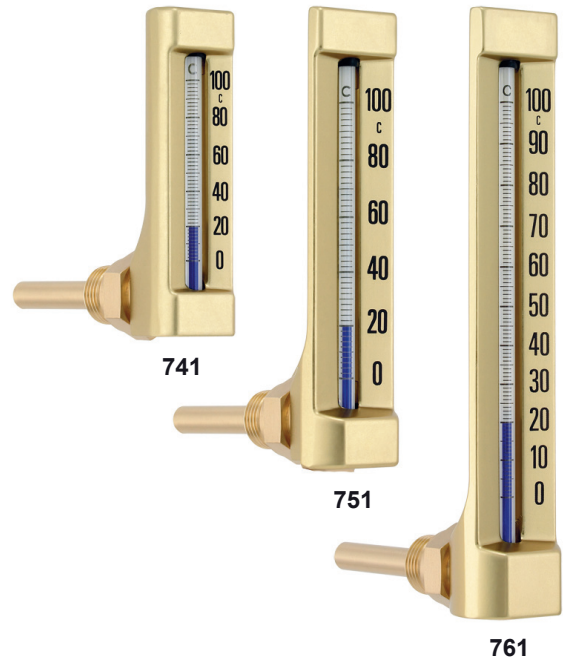
# Thermometer

Type 741, 751 och 761  
angle design

E 10.22.02

Ed.21.01

|                            |  |
|----------------------------|--|
| <b>Design</b>              | Machine glass thermometer in angle design complete with thermowell of brass.   |
| <b>Type</b>                | <b>741</b> = case 110x36 mm<br><b>751</b> = case 150x36 mm<br><b>761</b> = case 200x36 mm                                  |
| <b>Case</b>                | Brass coloured aluminium screw for mounting of thermowell  |
| <b>Temperature element</b> | Blue liquid filling  |
| <b>Location of stem</b>    | Back entry stem  |
| <b>Thermowell</b>          | Thermowell of brass with screw groove. Outside Ø10 mm with thread G1/2" Max pressure rate 16 bar                           |
| <b>Immersion length</b>    | L = 40, 50, 63, 100, 160, 200, 250, 300 mm   |
| <b>Stainless steel</b>     | Thermowell of stainless steel  |
| <b>Weld-in thermowell</b>  | The thermometer can be delivered with thermowell for welding Form D acc. to type D1, D2, D4 or D5. See datasheet E10.23.01 |



| Scale range | Error limit | Scale spacing |
|-------------|-------------|---------------|
| -30+50°C    | 2,0%        | 1°C           |
| 0+60°C      | 1,5%        | 1°C           |
| 0+120°C     | 2,0%        | 2°C           |
| 0+160°C     | 4,0%        | 2°C           |
| 0+200°C     | 4,0%        | 2°C           |

Type 741 has error limit 5% in range 0+200°C  
Type 741 has scale spacing 4°C in range 0+160°C and 5°C in range 0+200°C

## Options extras



**Thermowell TW50-J**  
Solid machined type  
stainless steel  
Page 4



**Thermowell TW45-G**  
fabricated type  
stainless steel  
Page 4



**Thermowell TW45-GS**  
fabricated type  
screw groove - stainless steel  
Page 4



**Weld-in type D**  
for welding  
steel, stainless, 13CrMo44  
See datasheet E10.23.01

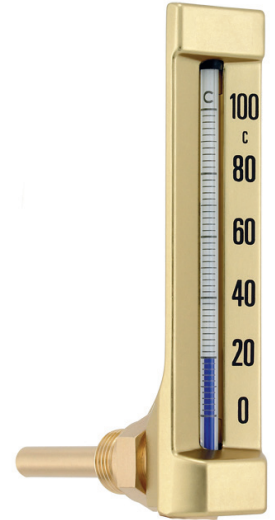
# Thermometer

Type 741, 751 och 761  
angle design

E 10.22.01

Code number for thermometer - Thermowell of brass Ø 10 mm - thread G1/2"

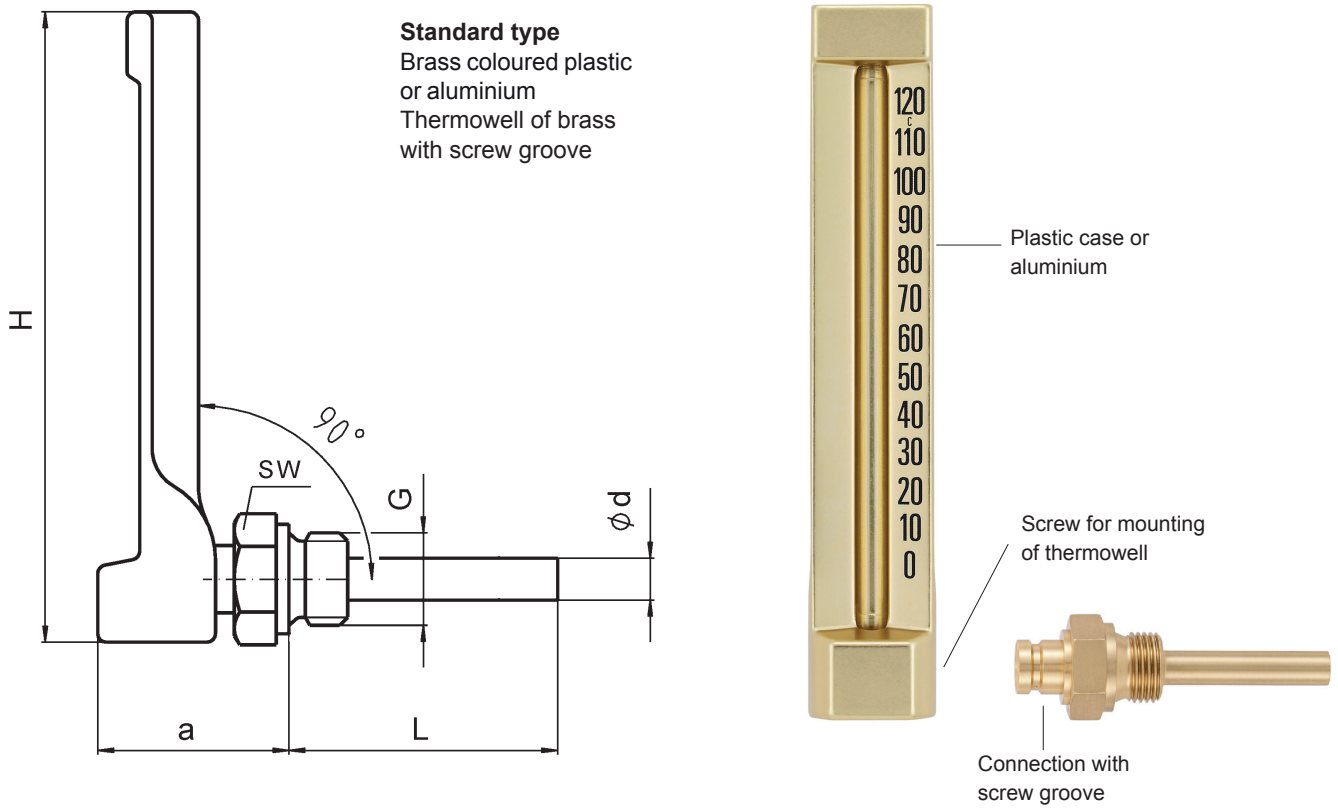
| Range             | Length L | type 741  | type 751  | type 761  |
|-------------------|----------|-----------|-----------|-----------|
| <b>-30 + 50°C</b> | 50 mm    | 0741 4604 | 0751 4604 | -         |
|                   | 63 mm    | 0741 4606 | 0751 4606 | -         |
|                   | 100 mm   | -         | 0751 4610 | 0761 4610 |
|                   | 160 mm   | -         | -         | 0761 4615 |
|                   | 200 mm   | -         | -         | 0761 4618 |
| <b>0 + 60°C</b>   | 40 mm    | 0741 0203 | -         | -         |
|                   | 63 mm    | 0741 0206 | -         | 0761 0206 |
|                   | 100 mm   | 0741 0210 | 0751 0210 | 0761 0210 |
| <b>0 + 120°C</b>  | 40 mm    | 0741 0403 | 0751 0403 | -         |
|                   | 50 mm    | 0741 0404 | -         | 0761 0404 |
|                   | 63 mm    | 0741 0406 | 0751 0406 | 0761 0406 |
|                   | 100 mm   | 0741 0410 | 0751 0410 | 0761 0410 |
|                   | 160 mm   | -         | -         | 0761 0415 |
|                   | 200 mm   | -         | -         | -         |
| <b>0 + 160°C</b>  | 63 mm    | 0741 0706 | -         | 0761 0706 |
|                   | 100 mm   | 0741 0710 | -         | 0761 0710 |
|                   | 160 mm   | -         | -         | 0761 0715 |
|                   | 250 mm   | -         | -         | 0761 0719 |
|                   | 300 mm   | -         | -         | 0761 0721 |
| <b>0 + 200°C</b>  | 100 mm   | -         | -         | 0761 0810 |
|                   | 160 mm   | -         | -         | 0761 0815 |



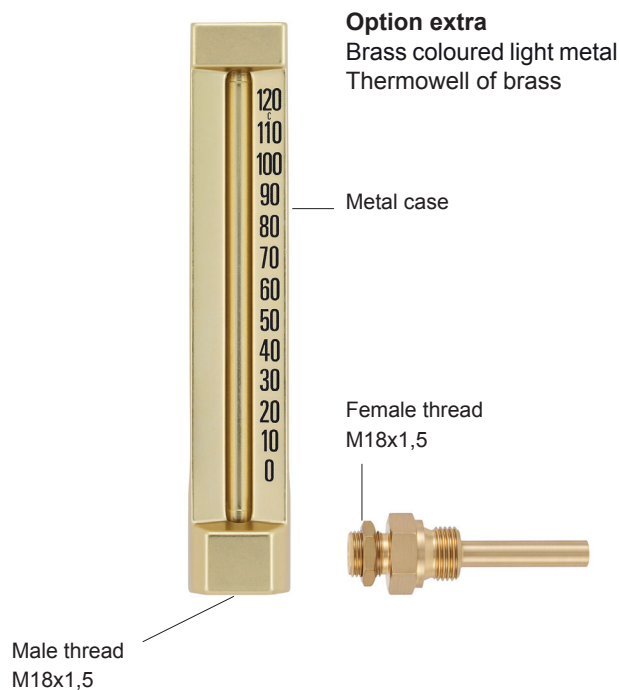
# Thermometer

Type 741, 751 och 761  
angle design

E 10.22.01



| Typ | H   | B  | Ø d | G     | SW | Immersion length L               |
|-----|-----|----|-----|-------|----|----------------------------------|
| 741 | 110 | 36 | 10  | G1/2" | 27 | 40, 50, 63 or 100 mm             |
| 751 | 150 | 36 | 10  | G1/2" | 27 | 40, 50, 63 or 100 mm             |
| 761 | 200 | 36 | 10  | G1/2" | 27 | 63, 100, 160, 200, 250 or 300 mm |



# Thermometer

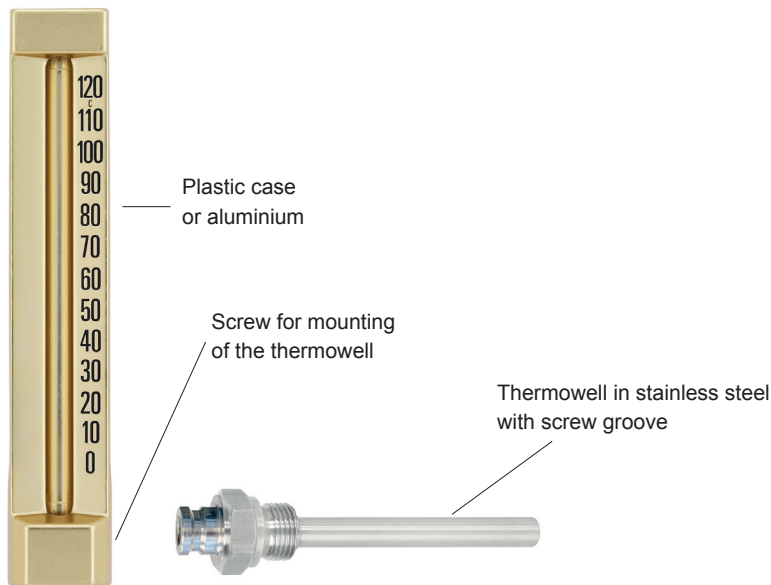
Type 741, 751 och 761  
angle design

E 10.22.01

## Thermowell in stainless steel as option extra

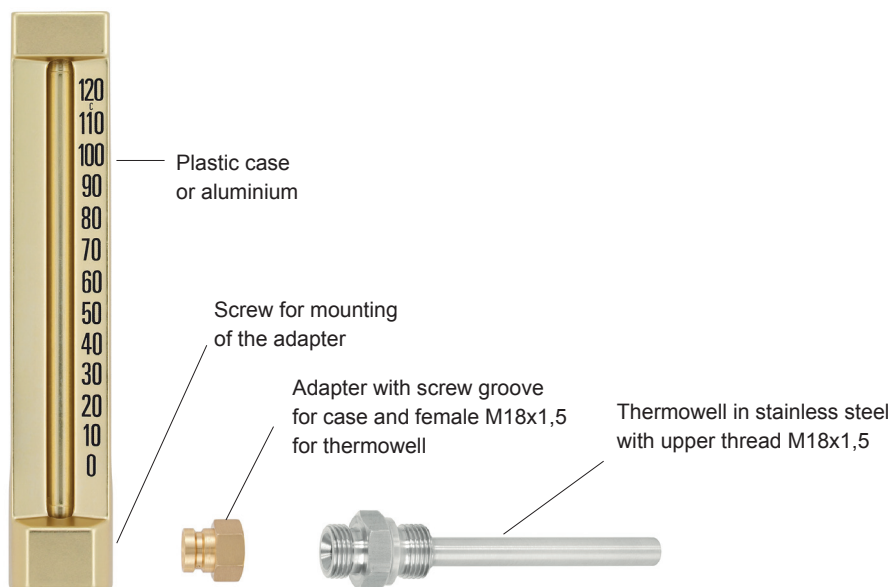
### Thermowell with screw groove

For direct mounting without adapter



### Thermowell with upper connection M18x1,5

Must be completed with adapter 75520900 of brass with screw groove for mounting in the case



# Thermometer

Type 741, 751 och 761  
angle design

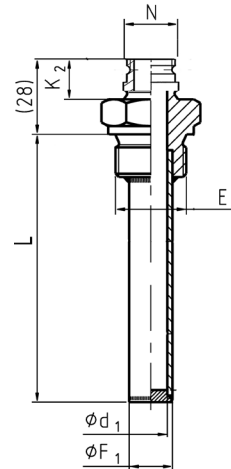
E 10.22.01

## Thermowell in stainless steel as option extra



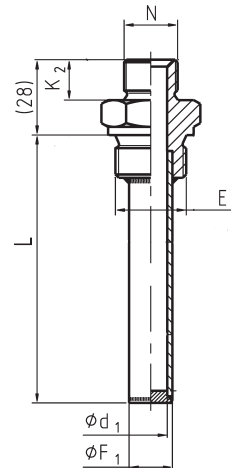
**Thermowell type TW45-GS**  
Thermowell in stainless steel 1.4571 or SS2348  
Fabricated type Ø10 mm - see datasheet E11.02.04  
With screw groove for direct mounting

| Length | Male  | Code     |
|--------|-------|----------|
| 40 mm  | G1/2" | 71700603 |
| 63 mm  | G1/2" | 71700606 |
| 100 mm | G1/2" | 71700610 |



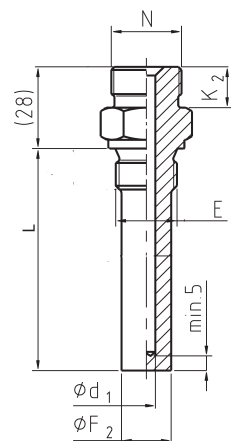
**Thermowell type TW45-G**  
Thermowell in stainless steel 1.4571 or SS2348  
Fabricated type Ø10 mm - see datasheet E11.02.02  
With adapter 75520900 of brass with screw groove

| Length | Male  | Code     |
|--------|-------|----------|
| 63 mm  | G1/2" | 71700806 |
| 100 mm | G1/2" | 71700810 |
| 160 mm | G1/2" | 71700815 |
| 200 mm | G1/2" | 71700818 |



**Thermowell type TW50-J**  
Thermowell in stainless steel 1.4571  
Solid machined type Ø14 mm - see datasheet E11.02.01  
With adapter 75520900 of brass with screw groove

| Length | Male  | Code     |
|--------|-------|----------|
| 40 mm  | G1/2" | 70700803 |
| 50 mm  | G1/2" | 70700804 |
| 63 mm  | G1/2" | 70700806 |
| 100 mm | G1/2" | 70700810 |
| 160 mm | G1/2" | 70700815 |



| Type     | N       | E     | Ø d1 | Ø F1 | Ø F2 | K2 | Immersion length          |
|----------|---------|-------|------|------|------|----|---------------------------|
| TW45-G S | Screw   | G1/2" | 8,2  | 10   | -    | 12 | 40, 63 or 100 mm          |
| TW45-G   | M18x1,5 | G1/2" | 8,2  | 10   | -    | 12 | 63, 100, 160 or 200 mm    |
| TW50-J   | M18x1,5 | G1/2" | 8,2  | -    | 14   | 12 | 40, 50, 63, 100 or 160 mm |